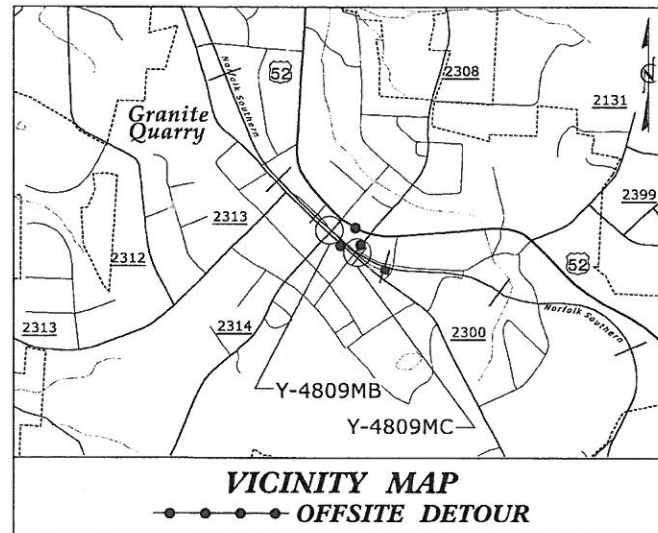


TIP PROJECT: Y-4809

CONTRACT: 80000.2.2.1

See Sheet 1-A For Index of Sheets



STATE OF NORTH CAROLINA
DIVISION OF HIGHWAYS

ROWAN COUNTY

STATE	STATE PROJECT REFERENCE NO.	SHEET NO.	TOTAL SHEETS
N.C.	Y-4809MB / Y-4809MC	1	
WBS ELEMENT	F. A. PROJ. NO.	DESCRIPTION	
40325.1.1		P.E.	
80000.2.2.1		CONST.	

Y-4809MB:

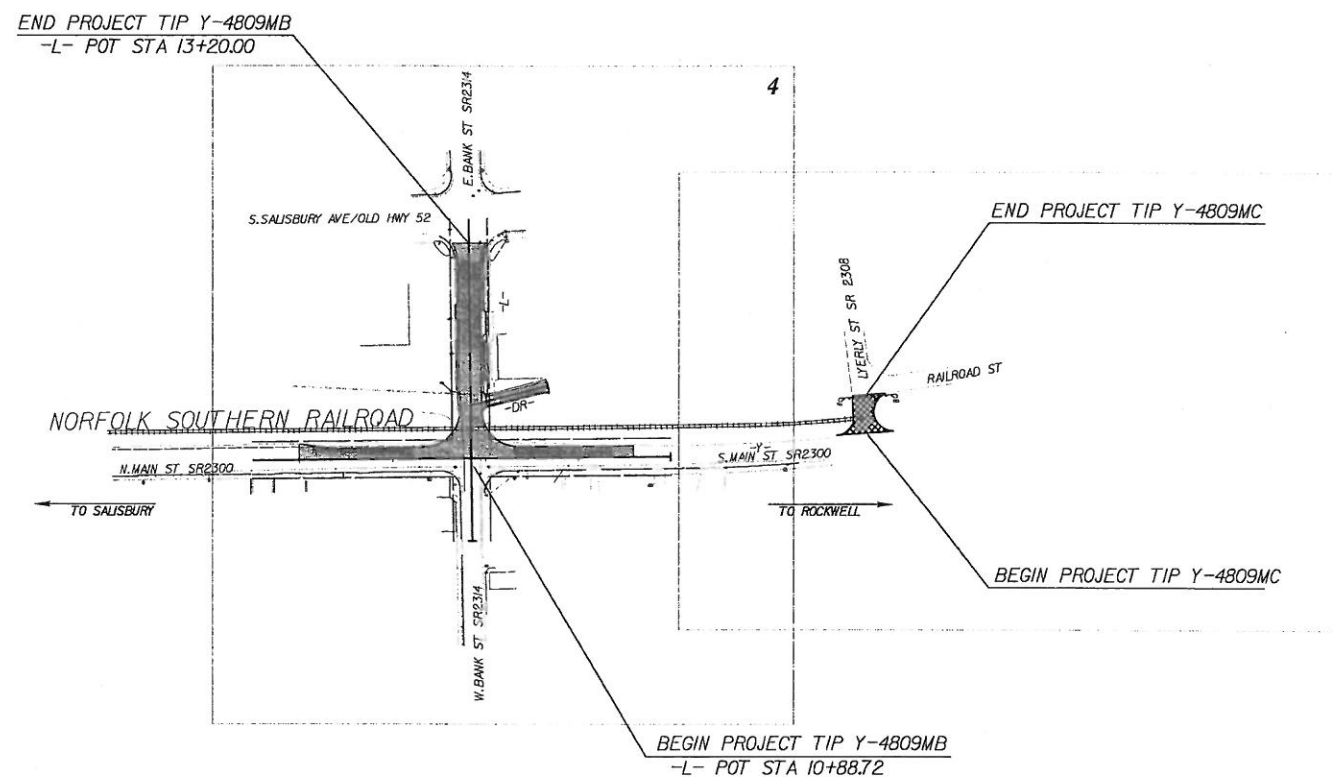
LOCATION: E.BANK ST. (SR 2314) FROM N. MAIN STREET (SR2300)
TO S. SALISBURY AVENUE (OLD HWY 52) IN GRANITE QUARRY.

TYPE OF WORK: GRADING, PAVING, & DRAINAGE

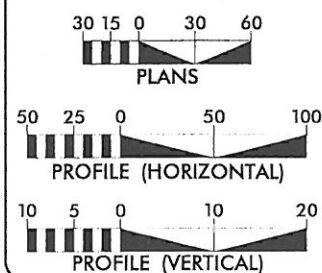
Y-4809MC:

LOCATION: LYERLY ST. FROM N. MAIN STREET (SR2300)
TO RAILROAD STREET IN GRANITE QUARRY.

TYPE OF WORK: GRADING, PAVEMENT REMOVAL, GUARDRAIL



GRAPHIC SCALES



DESIGN DATA

Y - MAIN ST:
ADT 2009 = 6100

L - BANK ST:
ADT 2009 = 2000

PROJECT LENGTH
Y-4809MB = 0.044 MI
Y-4809MC = 0.008 MI



NORTH CAROLINA DEPARTMENT OF TRANSPORTATION

RAIL DIVISION

Prepared in the Office of:

Hatch Mott
MacDonald

PO Box 700
Fayetteville, NC 27526
TEL (919) 552-2253
(919) 552-2254 (Fax)
www.hatchmott.com LICENSE NO. F-0669



SUNGATE DESIGN GROUP, P.A.

915 JONES FRANKLIN ROAD
RALEIGH, NORTH CAROLINA 27606
TEL (919) 859-2243 FAX (919) 859-6258
ENG FIRM LICENSE NO. C-890

Prepared for:

ENGINEERING & SAFETY BRANCH

MAIL: 7536 MAIL SERVICE CENTER RALEIGH, NC 27699-1556
DELIVERY: 8603 CAPITAL BOULEVARD RALEIGH, NC 27603
PHONE: (919) 715-8803
FAX: (919) 715-8804

2012 STANDARD SPECIFICATIONS

LETTING DATE:

NCDOT RAIL DIVISION CONTACT:
DANIEL HAVENER, PE

MICHAEL PEKAREK, PE
PROJECT ENGINEER

HYDRAULIC ENGINEER

Professional Engineer Seal for Henry Wells, PE, No. 9334, dated 6/25/14.

ROADWAY DESIGN

Professional Engineer Seal for Michael Pekarek, PE, No. 27391, dated 6/27/14.

GENERAL NOTES:

2012 SPECIFICATIONS
EFFECTIVE: 01-17-2012
REVISED: 07-30-2012

GRADING AND SURFACING OR RESURFACING AND WIDENING:

THE GRADE LINES SHOWN DENOTE THE FINISHED ELEVATION OF THE PROPOSED SURFACING AT GRADE POINTS SHOWN ON THE TYPICAL SECTIONS. WHERE NO GRADE LINES ARE SHOWN, THE PROFILES SHOWN DENOTE THE TOP ELEVATION OF THE EXISTING PAVEMENT ALONG THE CENTER LINE OF SURVEY ON WHICH THE PROPOSED RESURFACING WILL BE PLACED. GRADE LINES MAY BE ADJUSTED BY THE ENGINEER IN ORDER TO SECURE A PROPER TIE-IN.

CLEARING:

CLEARING ON THIS PROJECT SHALL BE PERFORMED TO THE LIMITS ESTABLISHED BY METHOD II.

SUPERELEVATION:

ALL CURVES ON THIS PROJECT SHALL BE SUPERELEVATED IN ACCORDANCE WITH STD. NO. 225.04 SUPERELEVATION IS TO BE REVOLVED ABOUT THE GRADE POINTS SHOWN ON THE TYPICAL SECTIONS.

SHOULDER CONSTRUCTION:

ASPHALT, EARTH, AND CONCRETE SHOULDER CONSTRUCTION ON THE HIGH SIDE OF SUPERELEVATED CURVES SHALL BE IN ACCORDANCE WITH

SUBSURFACE PLANS:

NO SUBSURFACE PLANS ARE AVAILABLE ON THIS PROJECT. THE CONTRACTOR SHOULD MAKE HIS OWN INVESTIGATION AS TO THE SUBSURFACE CONDITIONS.

DRIVEWAYS:

DRIVEWAYS SHALL BE CONSTRUCTED IN ACCORDANCE WITH STD. 848.02 USING 3' RADII OR RADII AS SHOWN ON THE PLANS. LOCATIONS OF DRIVES WILL BE AS SHOWN ON THE PLANS OR AS DIRECTED BY THE ENGINEER.

UTILITIES:

UTILITY OWNERS ON THIS PROJECT ARE UNKNOWN.

ANY RELOCATION OF EXISTING UTILITIES WILL BE ACCOMPLISHED BY OTHERS.

PROJECT REFERENCE	SHEET NO.
Y-4809MB / Y-4809MC	1-A
ROADWAY DESIGN ENGINEER	
HATCH MOTT MACDONALD I & E, LLC LICENSE NO. F-2649 Prepared in the Office of: Hatch Mott MacDonald P.O. Box 707 Fuquay-Varina, NC 27526 www.hatchmott.com	

SHEET NUMBER	INDEX OF SHEETS DESCRIPTION
1	TITLE SHEET
1-A	INDEX OF SHEETS, GENERAL NOTES, AND LIST OF STANDARD DRAWINGS
1-B	CONVENTIONAL SYMBOLS
2	PAVEMENT SCHEDULE AND TYPICAL SECTIONS
4, 5	PLAN SHEETS
6	PROFILE SHEET
TMP-1 THRU TMP-6	TRAFFIC CONTROL PLANS
EC-1 THRU EC-2	EROSION CONTROL PLANS
X-1	-L- CROSS-SECTIONS
X-2	-Y- CROSS-SECTIONS
X-3	-DR- CROSS-SECTIONS

EFF. 01-17-2012
REV. 10-30-2012

2012 ROADWAY ENGLISH STANDARD DRAWINGS

The following Roadway Standards as appear in "Roadway Standard Drawings" Highway Design Branch - N. C. Department of Transportation - Raleigh, N. C., Dated January, 2012 are applicable to this project and by reference hereby are considered a part of these plans:

STD.NO.	TITLE
DIVISION 2 - EARTHWORK	
200.02	Method of Clearing - Method II
225.02	Guide for Grading Subgrade - Secondary and Local
225.04	Method of Obtaining Superelevation - Two Lane Pavement
DIVISION 5 - SUBGRADE, BASES AND SHOULDERS	
560.01	Method of Shoulder Construction - High Side of Superelevated Curve - Method I
DIVISION 8 - INCIDENTALS	
840.71	Concrete and Brick Pipe Plug
846.01	Concrete Curb, Gutter and Curb & Gutter
848.01	Concrete Sidewalk
848.02	Driveway Turnout - Radius Type
862.01	Guardrail Placement
862.02	Guardrail Installation

dev56859
 r:\roadway\Proj\Y-4809M_rdl_psh_01A.dgn
 3/13/2014 9:52:23 AM

Note: Not to Scale

*S.U.E. = Subsurface Utility Engineering

STATE OF NORTH CAROLINA
DIVISION OF HIGHWAYS

CONVENTIONAL PLAN SHEET SYMBOLS

BOUNDARIES AND PROPERTY:

Table listing symbols for boundaries and property: State Line, County Line, Township Line, City Line, Reservation Line, Property Line, Existing Iron Pin, Property Corner, Property Monument, Parcel/Sequence Number, Existing Fence Line, Proposed Woven Wire Fence, Proposed Chain Link Fence, Proposed Barbed Wire Fence, Existing Wetland Boundary, Proposed Wetland Boundary, Existing Endangered Animal Boundary, Existing Endangered Plant Boundary, Known Soil Contamination: Area or Site, Potential Soil Contamination: Area or Site.

BUILDINGS AND OTHER CULTURE:

Table listing symbols for buildings and other culture: Gas Pump Vent or U/G Tank Cap, Sign, Well, Small Mine, Foundation, Area Outline, Cemetery, Building, School, Church, Dam.

HYDROLOGY:

Table listing symbols for hydrology: Stream or Body of Water, Hydro, Pool or Reservoir, Jurisdictional Stream, Buffer Zone 1, Buffer Zone 2, Flow Arrow, Disappearing Stream, Spring, Wetland, Proposed Lateral, Tail, Head Ditch, False Sump.

RAILROADS:

Table listing symbols for railroads: Standard Gauge, RR Signal Milepost, Switch, RR Abandoned, RR Dismantled.

RIGHT OF WAY:

Table listing symbols for right of way: Baseline Control Point, Existing Right of Way Marker, Existing Right of Way Line, Proposed Right of Way Line, Proposed Right of Way Line with Iron Pin and Cap Marker, Proposed Right of Way Line with Concrete or Granite RW Marker, Proposed Control of Access Line with Concrete CA Marker, Existing Control of Access, Proposed Control of Access, Existing Easement Line, Proposed Temporary Construction Easement, Proposed Temporary Drainage Easement, Proposed Permanent Drainage Easement, Proposed Permanent Drainage / Utility Easement, Proposed Permanent Utility Easement, Proposed Temporary Utility Easement, Proposed Aerial Utility Easement, Proposed Permanent Easement with Iron Pin and Cap Marker.

ROADS AND RELATED FEATURES:

Table listing symbols for roads and related features: Existing Edge of Pavement, Existing Curb, Proposed Slope Stakes Cut, Proposed Slope Stakes Fill, Proposed Curb Ramp, Existing Metal Guardrail, Proposed Guardrail, Existing Cable Guiderail, Proposed Cable Guiderail, Equality Symbol, Pavement Removal, VEGETATION: Single Tree, Single Shrub, Hedge, Woods Line.

Table listing symbols for orchard and vineyard.

EXISTING STRUCTURES:

Table listing symbols for existing structures: MAJOR: Bridge, Tunnel or Box Culvert, Bridge Wing Wall, Head Wall and End Wall; MINOR: Head and End Wall, Pipe Culvert, Footbridge, Drainage Box: Catch Basin, DI or JB, Paved Ditch Gutter, Storm Sewer Manhole, Storm Sewer.

UTILITIES:

Table listing symbols for utilities: POWER: Existing Power Pole, Proposed Power Pole, Existing Joint Use Pole, Proposed Joint Use Pole, Power Manhole, Power Line Tower, Power Transformer, U/G Power Cable Hand Hole, H-Frame Pole, Recorded U/G Power Line, Designated U/G Power Line (S.U.E.*); TELEPHONE: Existing Telephone Pole, Proposed Telephone Pole, Telephone Manhole, Telephone Booth, Telephone Pedestal, Telephone Cell Tower, U/G Telephone Cable Hand Hole, Recorded U/G Telephone Cable, Designated U/G Telephone Cable (S.U.E.*), Recorded U/G Telephone Conduit, Designated U/G Telephone Conduit (S.U.E.*), Recorded U/G Fiber Optics Cable, Designated U/G Fiber Optics Cable (S.U.E.*).

WATER:

Table listing symbols for water: Water Manhole, Water Meter, Water Valve, Water Hydrant, Recorded U/G Water Line, Designated U/G Water Line (S.U.E.*), Above Ground Water Line.

TV:

Table listing symbols for TV: TV Satellite Dish, TV Pedestal, TV Tower, U/G TV Cable Hand Hole, Recorded U/G TV Cable, Designated U/G TV Cable (S.U.E.*), Recorded U/G Fiber Optic Cable, Designated U/G Fiber Optic Cable (S.U.E.*).

GAS:

Table listing symbols for gas: Gas Valve, Gas Meter, Recorded U/G Gas Line, Designated U/G Gas Line (S.U.E.*), Above Ground Gas Line.

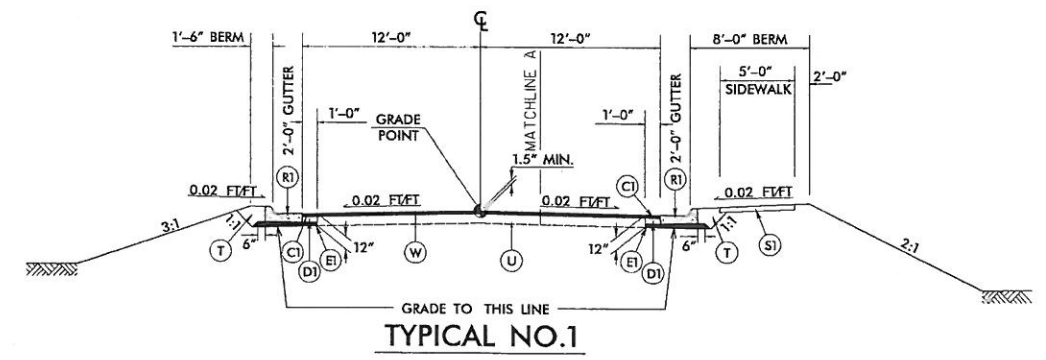
SANITARY SEWER:

Table listing symbols for sanitary sewer: Sanitary Sewer Manhole, Sanitary Sewer Cleanout, U/G Sanitary Sewer Line, Above Ground Sanitary Sewer, Recorded SS Forced Main Line, Designated SS Forced Main Line (S.U.E.*).

MISCELLANEOUS:

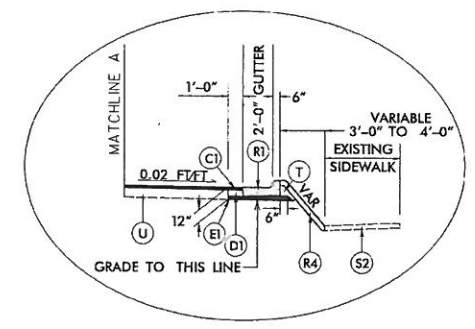
Table listing symbols for miscellaneous: Utility Pole, Utility Pole with Base, Utility Located Object, Utility Traffic Signal Box, Utility Unknown U/G Line, U/G Tank; Water, Gas, Oil, Underground Storage Tank, Approx. Loc., AG Tank; Water, Gas, Oil, Geoenvironmental Boring, U/G Test Hole (S.U.E.*), Abandoned According to Utility Records, End of Information.

Vertical text on the left margin: 04/25/2019 10:00 AM Project: Y-4809MS / Y-4809MC Job: 0111.dwg

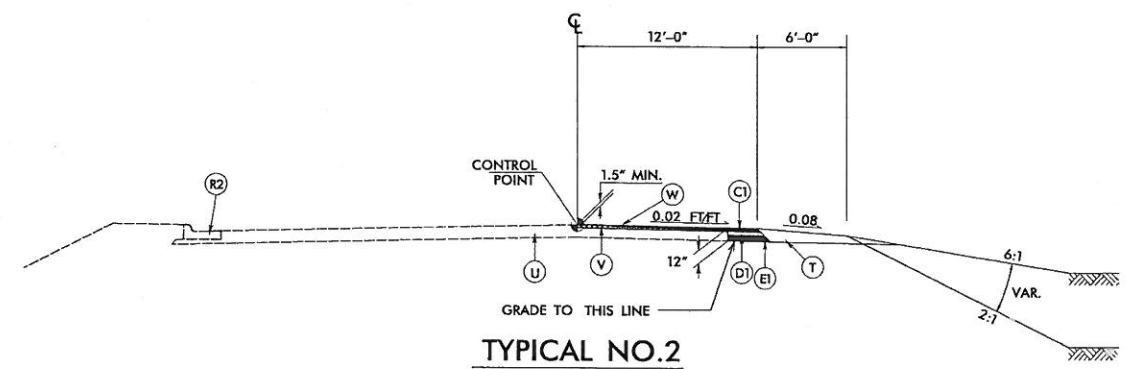


TYPICAL NO.1

USE TYPICAL SECTION NO. 1:
-L- STA 11+02.00 TO -L- STA 13+20.00

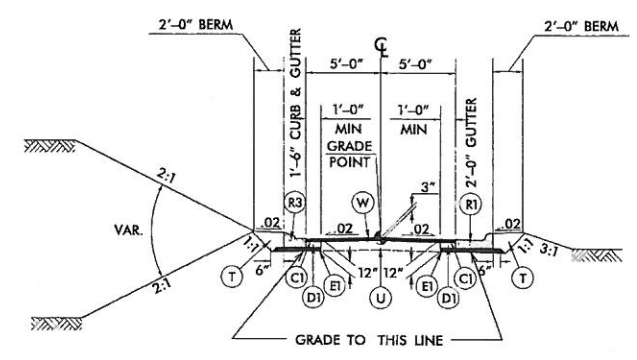


DETAIL A
USE IN CONJUNCTION WITH TYPICAL SECTION NO. 1
-L- STA 11+57.88 TO 12+21.58 RT



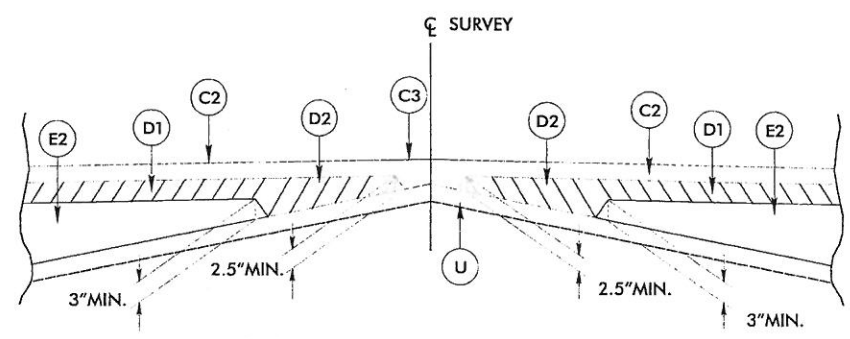
TYPICAL NO.2

USE TYPICAL SECTION NO. 2:
-Y- STA 10+40.00 TO -Y- STA 14+00.00



TYPICAL NO.3

USE TYPICAL SECTION NO. 3:
-DR- STA 10+10.00 TO -DR- STA 10+73.23



Detail Showing Method of Wedging

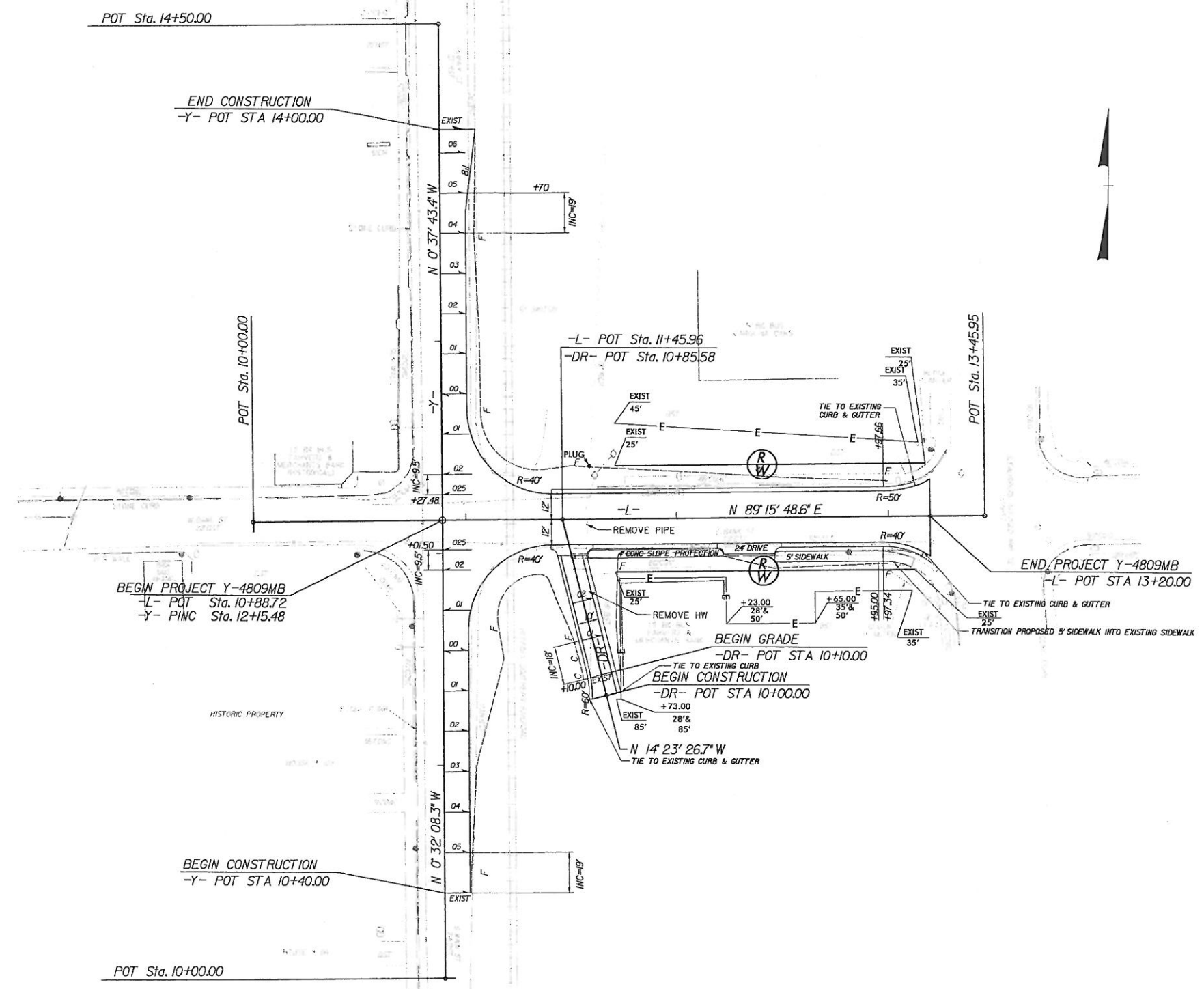
PAVEMENT SCHEDULE	
C1	PROP. APPROX. 3" ASPHALT CONCRETE SURFACE COURSE, TYPE S9.5B, AT AN AVERAGE RATE OF 336 LBS. PER SQ. YD. IN EACH OF TWO LAYERS.
C2	PROP. APPROX. 1½" ASPHALT CONCRETE SURFACE COURSE, TYPE S9.5B, AT AN AVERAGE RATE OF 168 LBS. PER SQ. YD.
C3	PROP. VAR. DEPTH ASPHALT CONCRETE SURFACE COURSE, TYPE S9.5B, AT AN AVERAGE RATE OF 112 LBS. PER SQ. YD. PER 1" DEPTH, TO BE PLACED IN LAYERS NOT LESS THAN 1½" IN DEPTH OR GREATER THAN 2" IN DEPTH.
D1	PROP. APPROX. 4" ASPHALT CONCRETE INTERMEDIATE COURSE, TYPE I19.0B, AT AN AVERAGE RATE OF 456 LBS. PER SQ. YD.
D2	PROP. VAR. DEPTH ASPHALT CONCRETE INTERMEDIATE COURSE, TYPE I19.0B, AT AN AVERAGE RATE OF 114 LBS. PER SQ. YD. PER 1" DEPTH, TO BE PLACED IN LAYERS NOT LESS THAN 2½" IN DEPTH OR GREATER THAN 4" IN DEPTH.
E1	PROP. APPROX. 5" ASPHALT CONCRETE BASE COURSE, TYPE B25.0B, AT AN AVERAGE RATE OF 570 LBS. PER SQ. YD.
E2	PROP. VAR. DEPTH ASPHALT CONCRETE BASE COURSE, TYPE B25.0B, AT AN AVERAGE RATE OF 114 LBS. PER SQ. YD. PER 1" DEPTH, TO BE PLACED IN LAYERS NOT LESS THAN 3" IN DEPTH OR GREATER THAN 5½" IN DEPTH.
R1	2'6" CONCRETE CURB.
R2	EXISTING 2'6" CONCRETE CURB.
R3	1'6" CONCRETE CURB.
R4	4" CONCRETE SLOPE PROTECTION.
S1	4" CONCRETE SIDEWALK
S2	EXISTING SIDEWALK
T	EARTH MATERIAL.
U	EXISTING PAVEMENT.
V	MILLING EXISTING PAVEMENT
W	VARIABLE DEPTH ASPHALT PAVEMENT (SEE STANDARD WEDGING DETAIL THIS SHEET)

NOTE: FOR VARIABLE SLOPES AND SHOULDER WIDTHS SEE CROSS-SECTIONS.
NOTE: PAVEMENT EDGE SLOPES ARE 1:1 UNLESS SHOWN OTHERWISE.

REVISIONS

dn: 56859
r:\a\osd\kay\p\o\j\y-4809mc\cd\typ.dgn
6/17/2014 10:26:07 AM

PROJECT REFERENCE Y-4809MB / Y-4809MC	SHEET NO. 4
ROADWAY DESIGN ENGINEER MICHAEL PENNER NORTH CAROLINA PROFESSIONAL SEAL 27391	HYDRAULICS ENGINEER HENRY WELLS NORTH CAROLINA PROFESSIONAL SEAL 9334
Prepared in the Office of: Hatch Mott MacDonald	
HATCH MOTT MACDONALD I & E, LLC LICENSE NO. F-6667 SUNGATE DESIGN GROUP, PA LICENSE NO. C-890 PO Box 770 Fuquay-Varina, NC 27526 www.hmm.com 1.800.440.4643	
GRAPHIC SCALE 30' 15' 0 30' 60'	


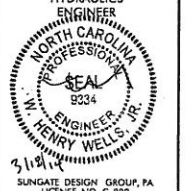




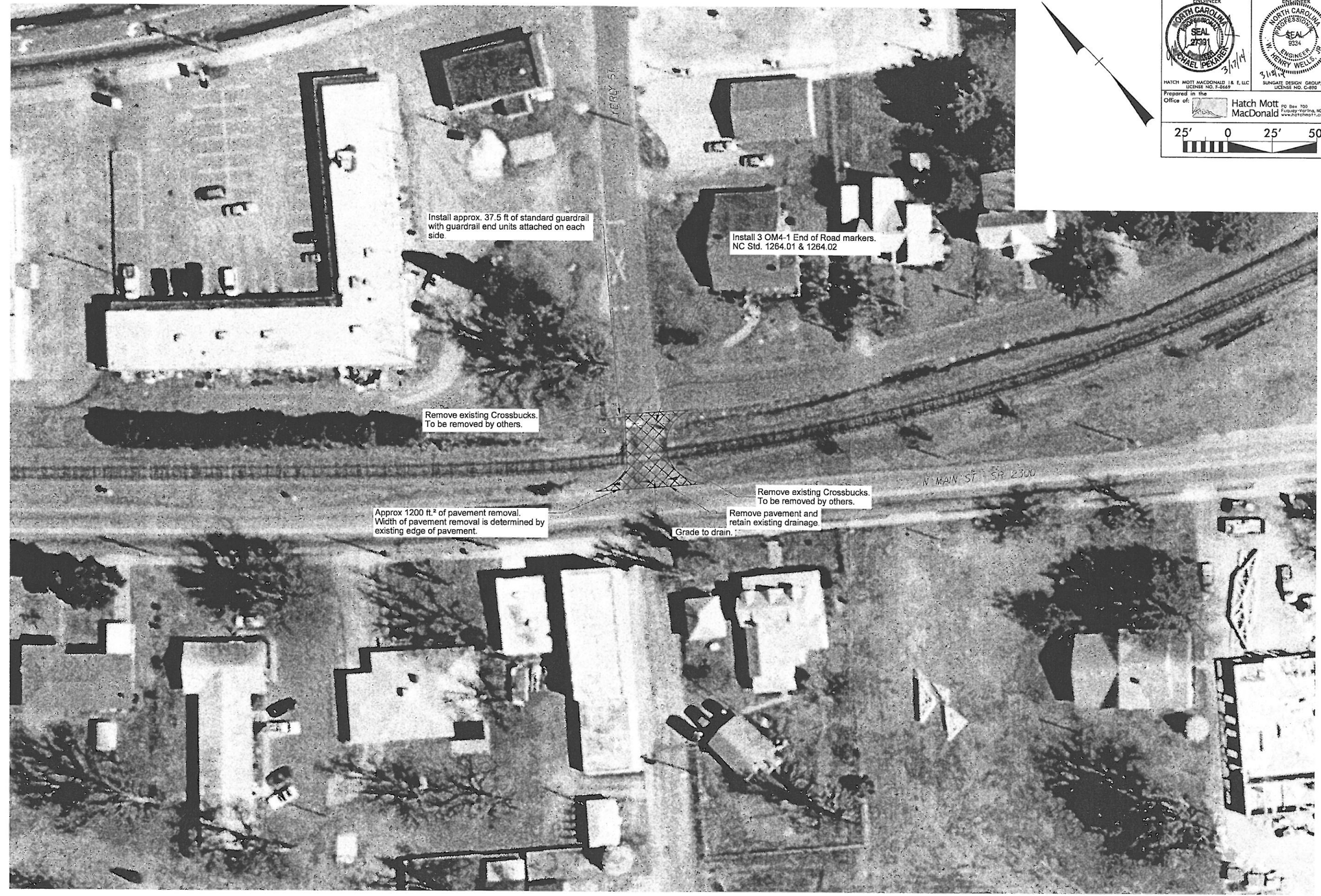
REVISIONS

d:\v\5853
5/2/2014
5:12:16 PM
d:\p\proj\y-4809\y-4809-mc-ds-psh_04.dgn


01

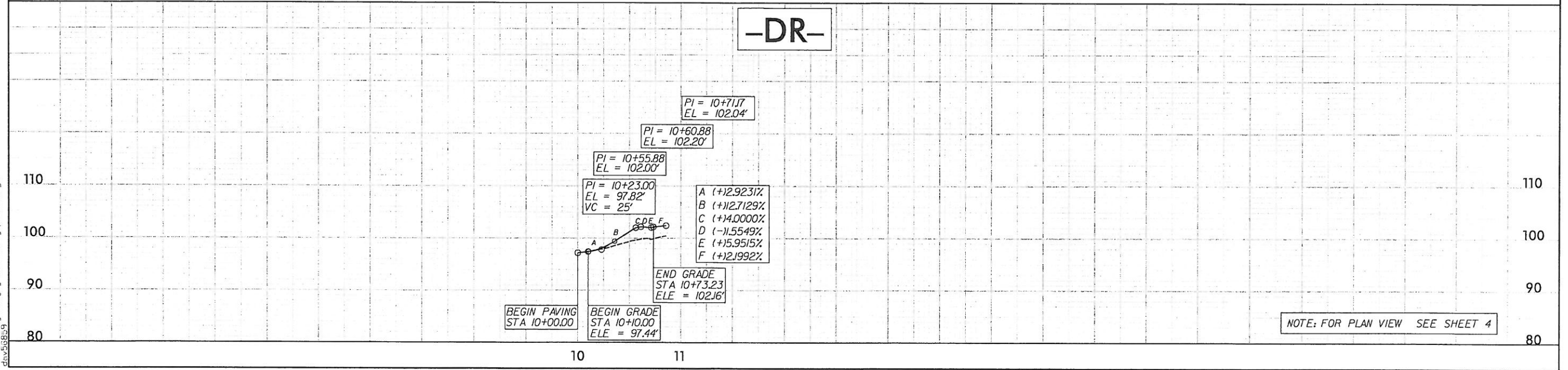
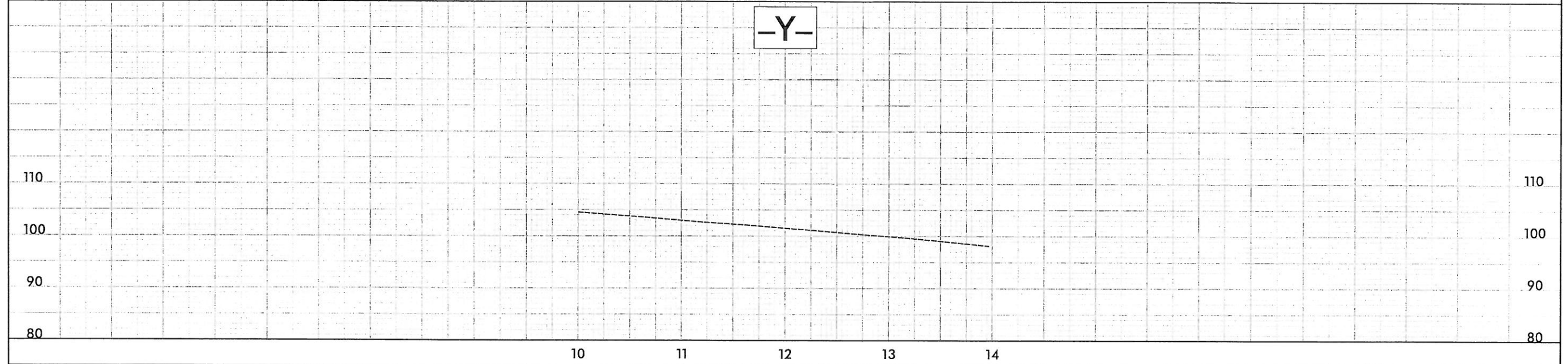
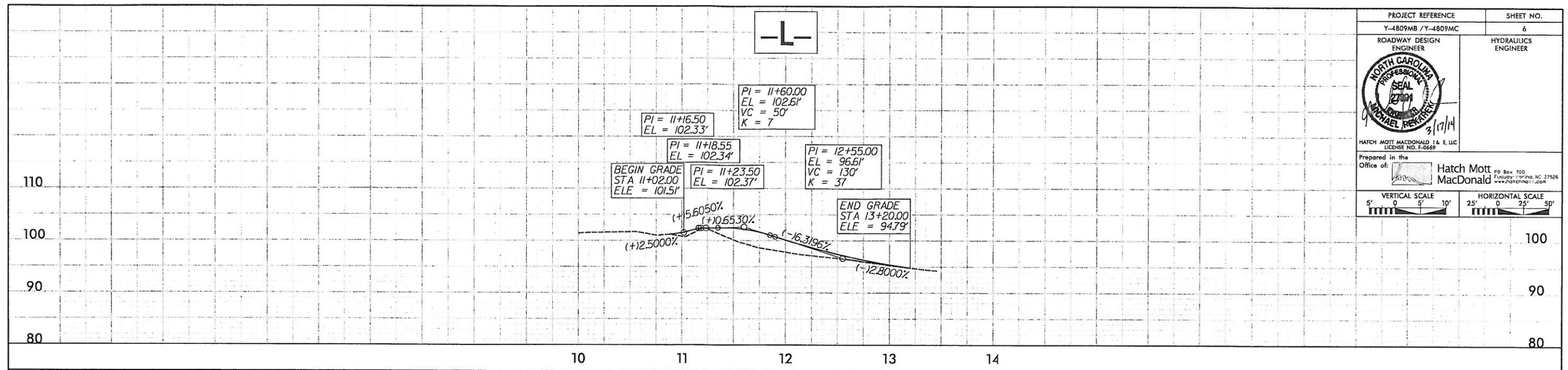
NOTE: FOR PROFILES SEE SHEET 6

PROJECT REFERENCE	SHEET NO.
Y-4809MB / Y-4809MC	5
ROADWAY DESIGN ENGINEER	HYDRAULICS ENGINEER
	
HATCH MOTT MACDONALD I & E, LLC LICENSE NO. F-2669	SUNGATE DESIGN GROUP, PA LICENSE NO. C-892
Prepared in the Office of:  Hatch Mott MacDonald	
	



d:\56659
 R:\Roadway\Proj\Y-4809m_rdy_psh_05.dgn
 3/17/2014 12:07:31 PM

PROJECT REFERENCE	SHEET NO.
Y-489MB / Y-489MC	6
ROADWAY DESIGN ENGINEER	HYDRAULICS ENGINEER
	
HATCH MOTT MACDONALD & E, LLC LICENSE NO. F-5669	
Prepared in the Office of:	Hatch Mott MacDonald
VERTICAL SCALE: 5' = 0" 5' 10" HORIZONTAL SCALE: 25' = 0" 25' 50"	



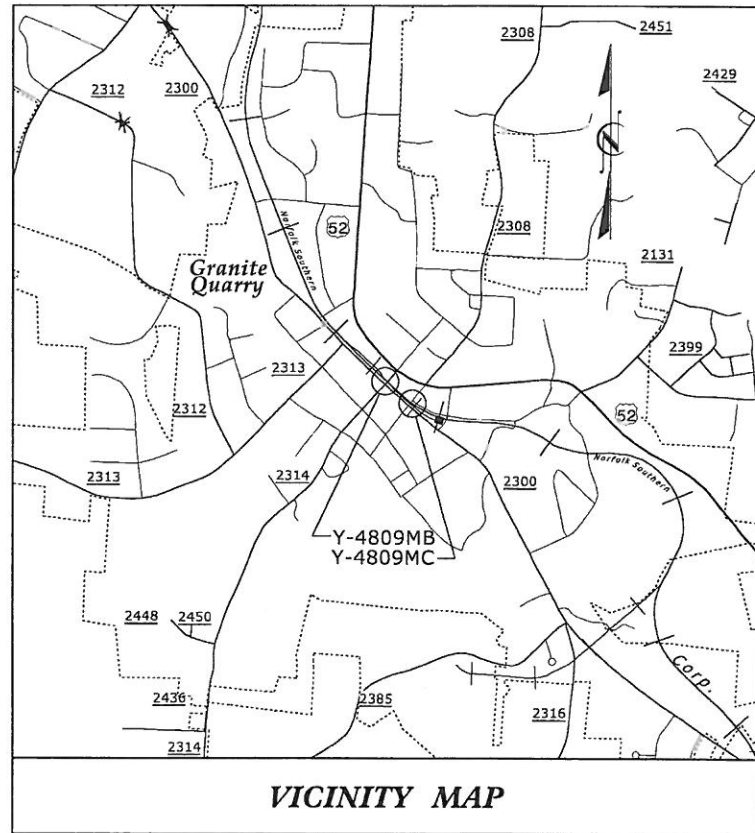
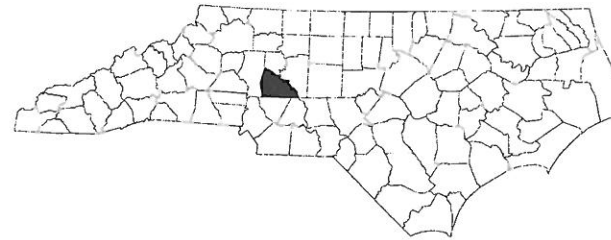
NOTE: FOR PLAN VIEW SEE SHEET 4

3/13/2014 3:47:22 PM
 R:\R222\Proj\Y-489MB\Y-489MC\rdy.psh.dwg
 d:\558809

STATE OF NORTH CAROLINA
DIVISION OF HIGHWAYS

TRANSPORTATION MANAGEMENT PLAN

ROWAN COUNTY



VICINITY MAP

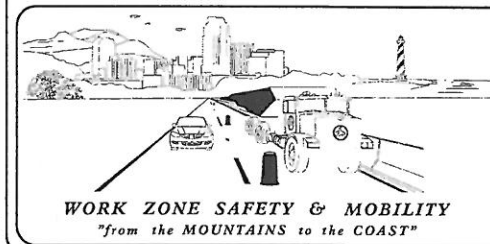
INDEX OF SHEETS	
SHEET NO.	TITLE
TMP-1	TITLE SHEET AND INDEX OF SHEETS
TMP-1A	LIST OF APPLICABLE ROADWAY STANDARD DRAWINGS, LEGEND, AND PERMANENT PAVEMENT MARKING QUANTITIES
TMP-2	GENERAL NOTES
TMP-3 THRU TMP-5	TEMPORARY TRAFFIC CONTROL PHASE DETAILS
TMP-6	SPECIAL SIGN DESIGN

SHEET NO.
TMP-1

Y-4809

TIP PROJECT:

c:\at\officecontrol\tcp\Y-4809M.TC.TCP-TMP01.dgn
 3/17/2014 10:56:51 AM



PREPARED IN THE OFFICE OF HATCH MOTT MACDONALD
FOR NORTH CAROLINA DEPARTMENT OF TRANSPORTATION

TIM JORDAN, PE TRAFFIC CONTROL PROJECT ENGINEER

J. T. DAVIS TRAFFIC CONTROL DESIGN TECHNICIAN

Hatch Mott MacDonald
 PO Box 700
 Fuquay-Varina, NC 27526
 (919) 552-2253
 (919) 552-2254 (Fax)
 www.hatchmott.com
LICENSE NO. F-0669

APPROVED: _____
 DATE: _____
 SEAL

 3/17/14

ROADWAY STANDARD DRAWINGS

THE FOLLOWING ROADWAY STANDARDS AS SHOWN IN "ROADWAY STANDARD DRAWINGS" - PROJECT SERVICES UNIT - N.C. DEPARTMENT OF TRANSPORTATION - RALEIGH, N.C., DATED JANUARY 2012 ARE APPLICABLE TO THIS PROJECT AND BY REFERENCE HEREBY ARE CONSIDERED A PART OF THESE PLANS:

<u>STD. NO.</u>	<u>TITLE</u>
1101.02	TEMPORARY LANE CLOSURES
1101.03	TEMPORARY ROAD CLOSURES
1101.11	TRAFFIC CONTROL DESIGN TABLES
1110.01	STATIONARY WORK ZONE SIGNS
1110.02	PORTABLE WORK ZONE SIGNS
1130.01	DRUMS
1135.01	CONES
1145.01	BARRICADES
1150.01	FLAGGING DEVICES
1180.01	SKINNY - DRUM
1205.01	PAVEMENT MARKINGS - LINE TYPES AND OFFSETS
1205.02	PAVEMENT MARKINGS - TWO LANE AND MULTILANE ROADWAYS
1205.04	PAVEMENT MARKINGS - INTERSECTIONS
1205.08	PAVEMENT MARKINGS - SYMBOLS AND WORD MESSAGES
1205.11	PAVEMENT MARKINGS - RAILROAD CROSSINGS
1261.01	GUARDRAIL AND BARRIER DELINEATORS - INSTALLATION SPACING
1261.02	GUARDRAIL AND BARRIER DELINEATORS - TYPES AND MOUNTING
1262.01	GUARDRAIL END DELINEATION
1264.01	OBJECT MARKERS - TYPES
1264.02	OBJECT MARKERS - INSTALLATION

LEGEND

GENERAL

- DIRECTION OF TRAFFIC FLOW
- DIRECTION OF PEDESTRIAN TRAFFIC FLOW
- EXIST. PVMT.
- NORTH ARROW
- PROPOSED PVMT.
- TEMP. SHORING (LOCATION PURPOSES ONLY)

- WORK AREA
- REMOVAL
- PAVEMENT OVERLAY
- USER DEFINED (IF NEEDED)

SIGNALS

- EXISTING
- PROPOSED
- TEMPORARY

PAVEMENT MARKINGS

- EXISTING LINES
- TEMPORARY LINES

TRAFFIC CONTROL DEVICES

- BARRICADE (TYPE III)
- CONE
- DRUM
- SKINNY DRUM
- TUBULAR MARKER
- TEMPORARY CRASH CUSHION
- FLASHING ARROW BOARD
- FLAGGER
- LAW ENFORCEMENT
- TRUCK MOUNTED ATTENUATOR (TMA)
- CHANGEABLE MESSAGE SIGN

TEMPORARY SIGNING

- PORTABLE SIGN
- STATIONARY SIGN
- STATIONARY OR PORTABLE SIGN

PAVEMENT MARKERS

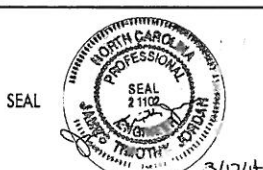

- CRYSTAL/CRYSTAL
- CRYSTAL/RED
- YELLOW/YELLOW

PAVEMENT MARKING SYMBOLS

- PAVEMENT MARKING SYMBOLS

PERMANENT PAVEMENT MARKINGS

SYMBOL	DESCRIPTION	QUANTITY
	THERMOPLASTIC(16", 120 MILS)	
T1	WHITE LINE, RR X	47 LF
	THERMOPLASTIC(24", 120 MILS)	
T2	WHITE STOPBAR	50 LF
	THERMOPLASTIC(4", 120 MILS)	
T8	2 FT. - 6 FT./SP WHITE MINISKIP	26 LF
T1	YELLOW DOUBLE CENTER	978 LF
	THERMOPLASTIC(4", 90 MILS)	
TA	WHITE EDGELINE	319 LF
	THERMOPLASTIC PAVEMENT MARKING CHARACTER (120 MILS)	
UI	ALPHANUMERIC CHARACTER - 'R'	2 EA

APPROVED: _____	DATE: _____	
	 Hatch Mott MacDonald <small>PO Box 700 Fayetteville, NC 27526 (919) 552-2253 (919) 552-2254 (Fax) www.hatchmott.com LICENSE NO. F-0669</small>	<h3 style="margin: 0;">ROADWAY STANDARD DRAWINGS & LEGEND</h3>

GENERAL NOTES

CHANGES MAY BE REQUIRED WHEN PHYSICAL DIMENSIONS IN THE DETAIL DRAWINGS, STANDARD DETAILS, AND ROADWAY DETAILS ARE NOT ATTAINABLE TO MEET FIELD CONDITIONS OR RESULT IN DUPLICATE OR UNDESIRE OVERLAPPING OF DEVICES. MODIFICATION MAY INCLUDE: MOVING, SUPPLEMENTING, COVERING, OR REMOVAL OF DEVICES AS DIRECTED BY THE ENGINEER.

THE FOLLOWING GENERAL NOTES APPLY AT ALL TIMES FOR THE DURATION OF THE CONSTRUCTION PROJECT EXCEPT WHEN OTHERWISE NOTED IN THE PLAN OR DIRECTED BY THE ENGINEER.

TIME RESTRICTIONS

A) DO NOT CLOSE OR NARROW TRAVEL LANES AS FOLLOWS:

ROAD NAME	DAY AND TIME RESTRICTIONS
MAIN STREET (-Y-)	MONDAY THROUGH FRIDAY 7:00 A.M. - 9:00 A.M. 3:00 P.M. - 5:30 P.M.

B) DO NOT CLOSE OR NARROW TRAVEL LANES DURING HOLIDAYS AND SPECIAL EVENTS AS FOLLOWS:

ROAD NAME

MAIN STREET (-Y-)

HOLIDAY

1. FOR ANY UNEXPECTED OCCURRENCE THAT CREATES UNUSUALLY HIGH TRAFFIC VOLUMES, AS DIRECTED BY THE ENGINEER.
2. FOR NEW YEAR'S, BETWEEN THE HOURS OF 7:00 A.M. DECEMBER 31st TO 4:00 P.M. JANUARY 2ND. IF NEW YEAR'S DAY IS ON A FRIDAY, SATURDAY, SUNDAY, OR MONDAY THEN UNTIL 4:00 P.M. THE FOLLOWING TUESDAY.
3. FOR EASTER, BETWEEN THE HOURS OF 7:00 A.M. THURSDAY AND 4:00 P.M. MONDAY.
4. FOR MEMORIAL DAY, BETWEEN THE HOURS OF 7:00 A.M. FRIDAY TO 4:00 P.M. TUESDAY.
5. FOR INDEPENDENCE DAY, BETWEEN THE HOURS OF 7:00 A.M. THE DAY BEFORE INDEPENDENCE DAY AND 4:00 P.M. THE DAY AFTER INDEPENDENCE DAY.

IF INDEPENDENCE DAY IS ON A FRIDAY, SATURDAY, SUNDAY OR MONDAY THEN BETWEEN THE HOURS OF 7:00 A.M. THE THURSDAY BEFORE INDEPENDENCE DAY AND 4:00 P.M. THE TUESDAY AFTER INDEPENDENCE DAY.
6. FOR LABOR DAY, BETWEEN THE HOURS OF 7:00 A.M. FRIDAY AND 4:00 P.M. TUESDAY.
7. FOR THANKSGIVING DAY, BETWEEN THE HOURS OF 7:00 A.M. TUESDAY TO 4:00 P.M. MONDAY.
8. FOR CHRISTMAS, BETWEEN THE HOURS OF 7:00 A.M. THE FRIDAY BEFORE THE WEEK OF CHRISTMAS DAY AND 4:00 P.M. THE FOLLOWING TUESDAY AFTER THE WEEK OF CHRISTMAS.

C) DO NOT CLOSE ROADS AS FOLLOWS:

ROAD NAME	DAY AND TIME RESTRICTIONS
MAIN STREET (-Y-)	ANYTIME

D) DO NOT STOP TRAFFIC AS FOLLOWS:

ROAD NAME	DAY AND TIME RESTRICTIONS	DURATION AND OPERATION
MAIN STREET (-Y-)	MONDAY THROUGH FRIDAY 7:00 A.M. - 9:00 A.M. 3:00 P.M. - 5:30 P.M.	TRAFFIC OPERATIONS

LANE AND SHOULDER CLOSURE REQUIREMENTS

- E) REMOVE LANE CLOSURE DEVICES FROM THE LANE WHEN WORK IS NOT BEING PERFORMED BEHIND THE LANE CLOSURE OR WHEN A LANE CLOSURE IS NO LONGER NEEDED OR AS DIRECTED BY THE ENGINEER.
- F) WHEN PERSONNEL AND/OR EQUIPMENT ARE WORKING ON THE SHOULDER ADJACENT TO AN UNDIVIDED FACILITY AND WITHIN 5 FT OF AN OPEN TRAVEL LANE, CLOSE THE NEAREST OPEN TRAVEL LANE USING ROADWAY STANDARD DRAWING NO. 1101.02 UNLESS THE WORK AREA IS PROTECTED BY BARRIER OR GUARDRAIL.
- G) WHEN PERSONNEL AND/OR EQUIPMENT ARE WORKING WITHIN A LANE OF TRAVEL OF AN UNDIVIDED OR DIVIDED FACILITY, CLOSE THE LANE ACCORDING TO THE TRAFFIC CONTROL PLANS, ROADWAY STANDARD DRAWINGS, OR AS DIRECTED BY THE ENGINEER. CONDUCT THE WORK SO THAT ALL PERSONNEL AND/OR EQUIPMENT REMAIN WITHIN THE CLOSED TRAVEL LANE.
- H) CONTRACTOR SHALL COORDINATE WITH THE PROPERTY OWNER OF THE PHARMACY IN ORDER TO MAINTAIN EGRESS FROM PHARMACY DRIVE-THRU TO EAST BANK STREET (RIGHT OUT ONLY).

PAVEMENT EDGE DROP OFF REQUIREMENTS

- I) BACKFILL AT A 6:1 SLOPE UP TO THE EDGE AND ELEVATION OF EXISTING PAVEMENT IN AREAS ADJACENT TO AN OPENED TRAVEL LANE THAT HAS AN EDGE OF PAVEMENT DROP-OFF AS FOLLOWS:

BACKFILL DROP-OFFS THAT EXCEED 2 INCHES ON ROADWAYS WITH POSTED SPEED LIMITS OF 45 MPH OR GREATER.

BACKFILL DROP-OFFS THAT EXCEED 3 INCHES ON ROADWAYS WITH POSTED SPEED LIMITS LESS THAN 45 MPH.

BACKFILL WITH SUITABLE COMPACTED MATERIAL, AS APPROVED BY THE ENGINEER, AT NO EXPENSE TO THE DEPARTMENT.

J) DO NOT EXCEED A DIFFERENCE OF 2 INCHES IN ELEVATION BETWEEN OPEN LANES OF TRAFFIC FOR NOMINAL LIFTS OF 1.5 INCHES. INSTALL ADVANCE WARNING "UNEVEN LANES" SIGNS (W8-11) 200 FEET IN ADVANCE AND A MINIMUM OF EVERY HALF MILE THROUGHOUT THE UNEVEN AREA.

TRAFFIC PATTERN ALTERATIONS

K) NOTIFY THE ENGINEER TWENTY ONE (21) CALENDAR DAYS PRIOR TO ANY TRAFFIC PATTERN ALTERATION.

SIGNING

- L) INSTALL ADVANCE WORK ZONE WARNING SIGNS WHEN WORK IS WITHIN 40 FT FROM THE EDGE OF TRAVEL LANE AND NO MORE THAN THREE (3) DAYS PRIOR TO THE BEGINNING OF CONSTRUCTION.
- M) PROVIDE SIGNING AND DEVICES REQUIRED TO CLOSE THE ROAD ACCORDING TO THE ROADWAY STANDARD DRAWINGS AND TRAFFIC CONTROL PLANS.

PROVIDE SIGNING REQUIRED FOR THE OFF-SITE DETOUR ROUTE AS SHOWN IN THE TRAFFIC CONTROL PLANS.
- N) COVER OR REMOVE ALL SIGNS AND DEVICES REQUIRED TO CLOSE THE ROAD WHEN ROAD CLOSURE IS NOT IN OPERATION.

COVER OR REMOVE ALL SIGNS REQUIRED FOR THE OFF-SITE DETOUR WHEN THE DETOUR IS NOT IN OPERATION.
- O) ENSURE ALL NECESSARY SIGNING IS IN PLACE PRIOR TO ALTERING ANY TRAFFIC PATTERN.
- P) INSTALL BLACK ON ORANGE "DIP" SIGNS (W8-2) AND/OR "BUMP" SIGNS (W8-1) 200 FEET IN ADVANCE OF THE UNEVEN AREA, OR AS DIRECTED BY THE ENGINEER.

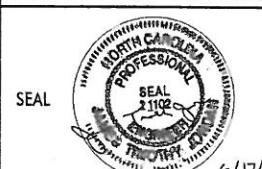

TRAFFIC CONTROL DEVICES

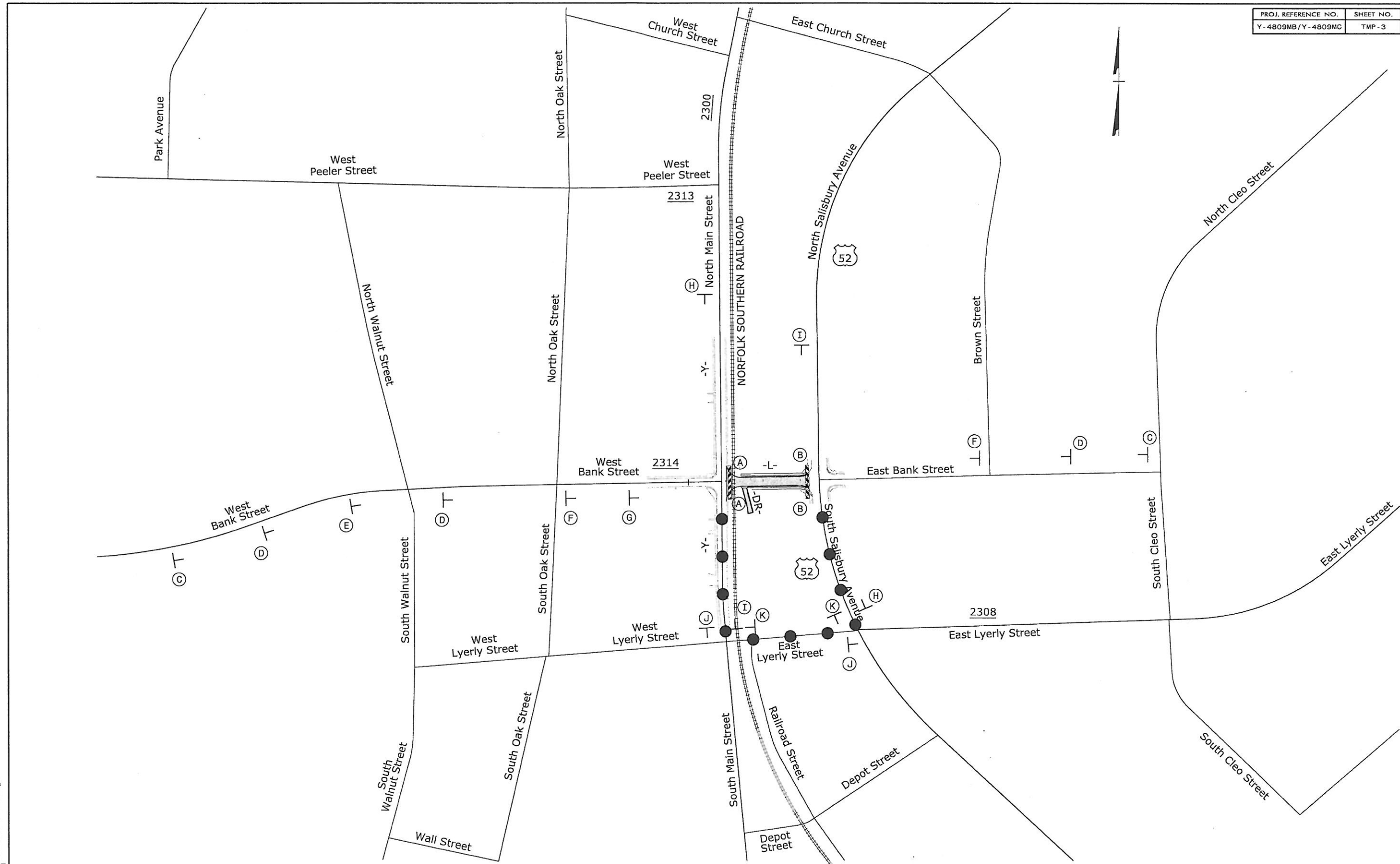
- Q) WHEN LANE CLOSURES ARE NOT IN EFFECT SPACE CHANNELIZING DEVICES IN WORK AREAS NO GREATER IN FEET THAN TWICE THE POSTED SPEED LIMIT (MPH) EXCEPT, 10 FT ON-CENTER IN RADII, AND 3 FT OFF THE EDGE OF AN OPEN TRAVELWAY.

REFER TO STANDARD SPECIFICATIONS FOR ROADS AND STRUCTURES SECTIONS 1130 (DRUMS), 1135 (CONES) AND 1180 (SKINNY DRUMS) FOR ADDITIONAL REQUIREMENTS.
- R) PLACE TYPE III BARRICADES, WITH "ROAD CLOSED" SIGN R11-2 ATTACHED, OF SUFFICIENT LENGTH TO CLOSE ENTIRE ROADWAY.

PAVEMENT MARKINGS AND MARKERS

S) TIE PROPOSED PAVEMENT MARKING LINES TO EXISTING PAVEMENT MARKING LINES.

APPROVED: _____	DATE: _____	
 <p style="font-size: 8px;">PO Box 700 Fayetteville, NC 27526 (919) 552-2253 (919) 552-2254 (Fax) www.hatchmott.com LICENSE NO. F-0669</p>		GENERAL NOTES



LEGEND	
	DETOUR ROUTE
	STATIONARY SIGN

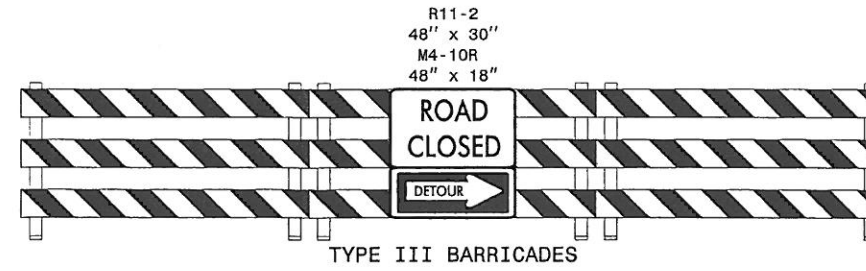
APPROVED:	DATE:
	3/17/14

Hatch Mott MacDonald

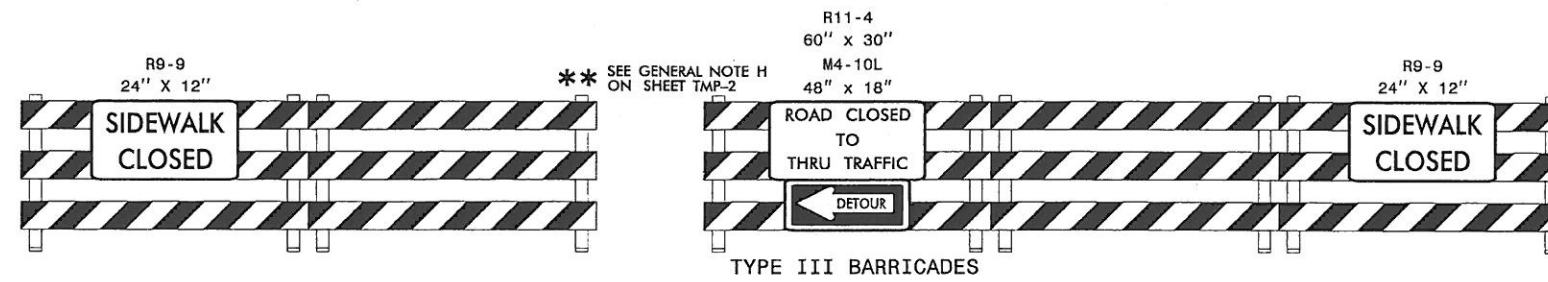
PO Box 700
Fayetteville, NC 27526
(919) 552-2263
(919) 577-2244 (Fax)
www.hatchmott.com
LICENSE NO. P-9669

**PHASE I DETAIL
STEPS 1 & 2
OFF-SITE DETOUR**

d:\y56869\1\acct\mtr\TCOPY-4809M.TC.TCP_TMP03.dgn
 3/17/2014 10:57:16 AM



(A)



(B)

* SEE TMP-6 FOR SPECIAL SIGN DESIGN



(C)



(D)



(E)



(F)



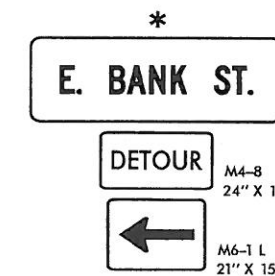
(G)



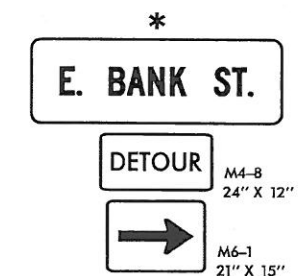
(H)



(I)



(J)



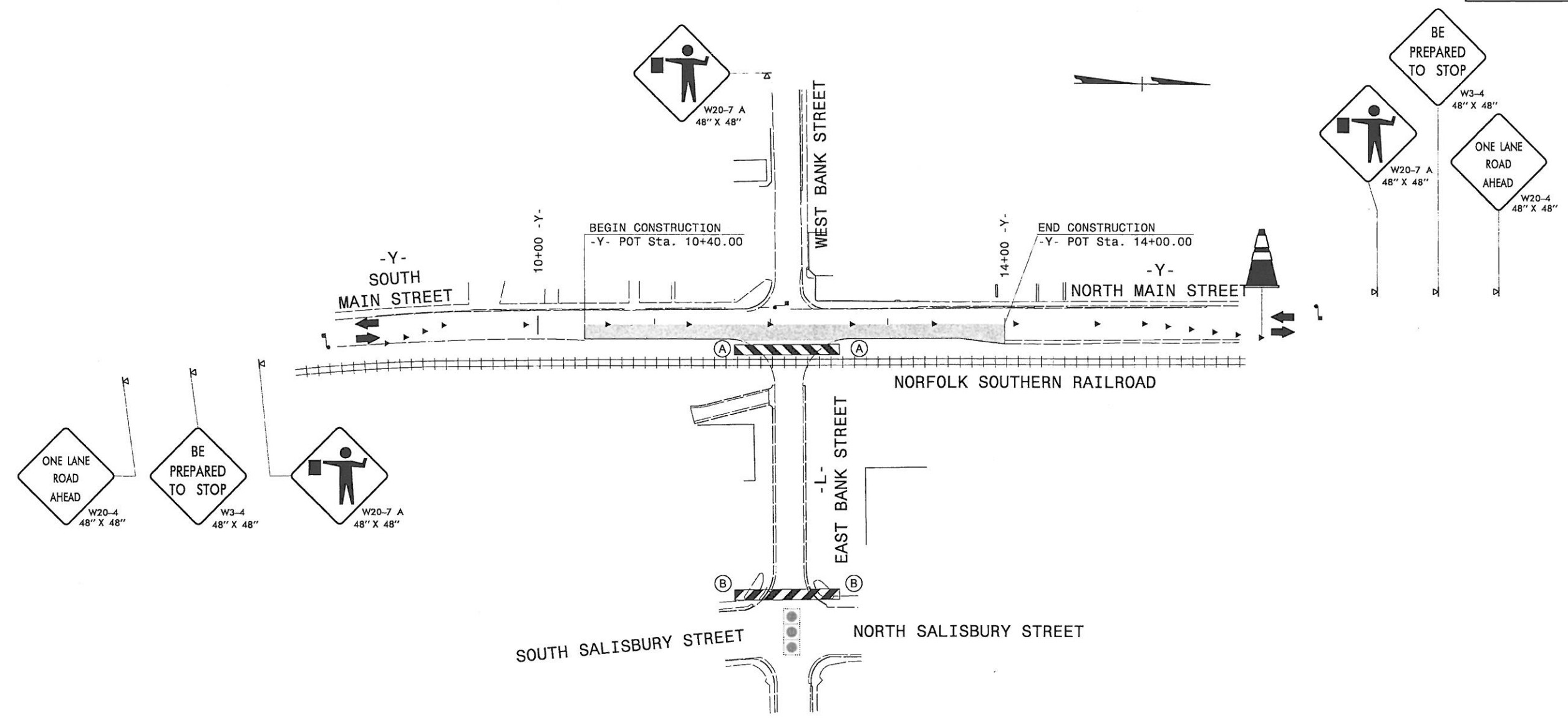
(K)

PHASE I

- STEP 1: USING ROADWAY STANDARD DRAWING 1101.03 SHEET 2 OF 9 AND SHEETS TMP-3 AND TMP-4, PERFORM THE FOLLOWING:
- INSTALL ALL ROAD CLOSURE AND DETOUR SIGNING (INCLUDING BARRICADES), MAINTAIN EXISTING STOP SIGN AND/OR SIGNAL AT EACH END OF -L- (EAST BANK STREET).
 - CLOSE -L- (EAST BANK STREET).
 - PLACE TRAFFIC ON OFF-SITE DETOUR.
- STEP 2: CONSTRUCT -L- STA 11+02 TO 13+20 (INCLUDING -DR-) AS SHOWN ON TMP-3 AND TMP-4.

dev:56859
 R:\Traffic\Contr-ol\TCF\Y-4809M.TC.TCP_TMP04.dgn
 10/10/14 10:10:07 AM

APPROVED: _____ DATE: _____		 Hatch Mott MacDonald PO Box 700 Raleigh, NC 27626 (919) 552-2253 (919) 552-2254 (fax) www.hatchmott.com LICENSE NO. F-9669	PHASE I DETAIL STEPS 1 & 2 OFF-SITE DETOUR SIGNS AND BARRICADES
SEAL			

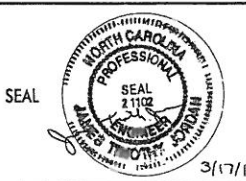



PHASE I (CONTINUED)

- STEP 3: USING ROADWAY STANDARD DRAWING 1101.02 SHEET 1 OF 15 AND FLAGGERS AS NEEDED:
-CONSTRUCT -Y- (MAIN STREET) STA 10+40 TO 14+00 AS SHOWN ON TMP-5.
- STEP 4: COMPLETE CONSTRUCTION OUTLINED IN STEPS 2 AND 3 AND INSTALL FINAL PAVEMENT MARKINGS ON -Y- (MAIN STREET) AND -L- (EAST BANK STREET).
- STEP 5: REMOVE TRAFFIC CONTROL DEVICES AND REOPEN -Y- (MAIN STREET) AND -L- (EAST BANK STREET) TO TRAFFIC.

PHASE II

- STEP 1: USING ROADWAY STANDARD DRAWING 1101.02 SHEET 1 OF 15 AND FLAGGERS AS NEEDED:
-REMOVE EXISTING RAIL CROSSING ON LYERLY STREET (SEE SHEET 5).

APPROVED: _____ DATE: _____		 Hatch Mott MacDonald PO Box 700 Cary, NC 27526 (919) 552-2200 (919) 552-2234 (Fax) www.hatchmott.com LICENSE NO. F-9669	PHASE I DETAIL STEPS 3 THRU 5 PHASE II DETAIL
SEAL			

dev561059
 2/17/2014 10:57:37 AM
 \\TCFV\Y-4809M_TC_TCP_TMP05.dgn

SIGN NUMBER: SD TYPE: D QUANTITY: 4 SIGN WIDTH: 4'-6" HEIGHT: 1'-6" TOTAL AREA: 6.8 Sq.Ft.	BACKG COLOR: Fluorescent Orange COPY COLOR: Black	DESIGN BY: JTD PROJECT ID: Y-4809M	CHECKED BY: NKP DIV: 9	DATE: Dec 06, 2013
---	--	---------------------------------------	---------------------------	--------------------

SYMBOL	X	Y	WID	HT

BORDER TYPE: INSET
RECESS: 0.47"
WIDTH: 0.63"
RADII: 1.5"

NO. Z BARS:
LENGTH:

MAT'L: 0.125" (3.2 mm) ALUMINUM

USE NOTES: 1,2

- Legend and border shall be direct applied black non-reflective sheeting.
- Background shall be NC GRADE B fluorescent orange retroreflective sheeting.

BORDER
R=1.5"
TH=0.63"
IN=0.47"

Panel Style: construction_guide.ssi
M.U.T.C.D.: 2009 Edition

Spacing Factor is 1 unless specified otherwise

LETTER POSITIONS

Letter locations are panel edge to lower left corner

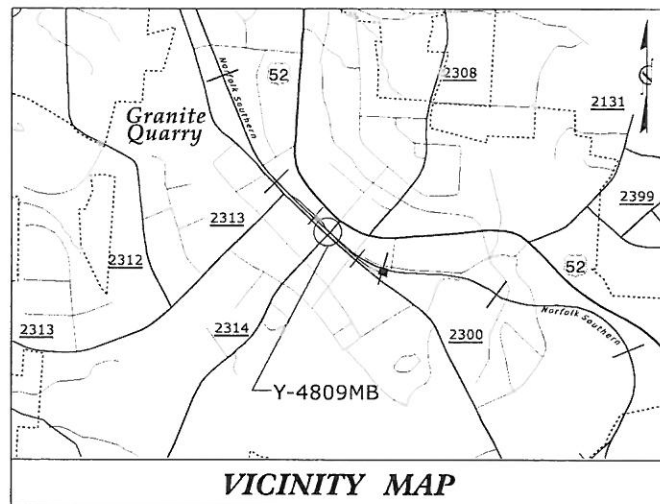
Letter locations are panel edge to lower left corner													Series/Size
E	.	B	A	N	K	S	T	.					C 2000
6.2	9.9	10.8	16.8	20.7	25.4	30.1	33.5	39.5	43.4	46.8			41.6

FILENAME: Y-4809M_TC_TMP_SD1 NORTH CAROLINA D.O.T. SIGN DETAIL

dev50859
 R:\Projects\Central\TC\Y-4809M_TC.TCP_TMP06.dgn
 3/17/2014 10:57:44 AM

APPROVED: <i>Nathan L Phillips</i> DATE: 3-7-14 SEAL	 Hatch Mott MacDonald PO Box 700 Fuquay-Varina, NC 27526 (919) 552-2253 (919) 552-2254 (Fax) www.hatchmott.com LICENSE NO. F-6669	SPECIAL SIGN DESIGN
---	--	---------------------

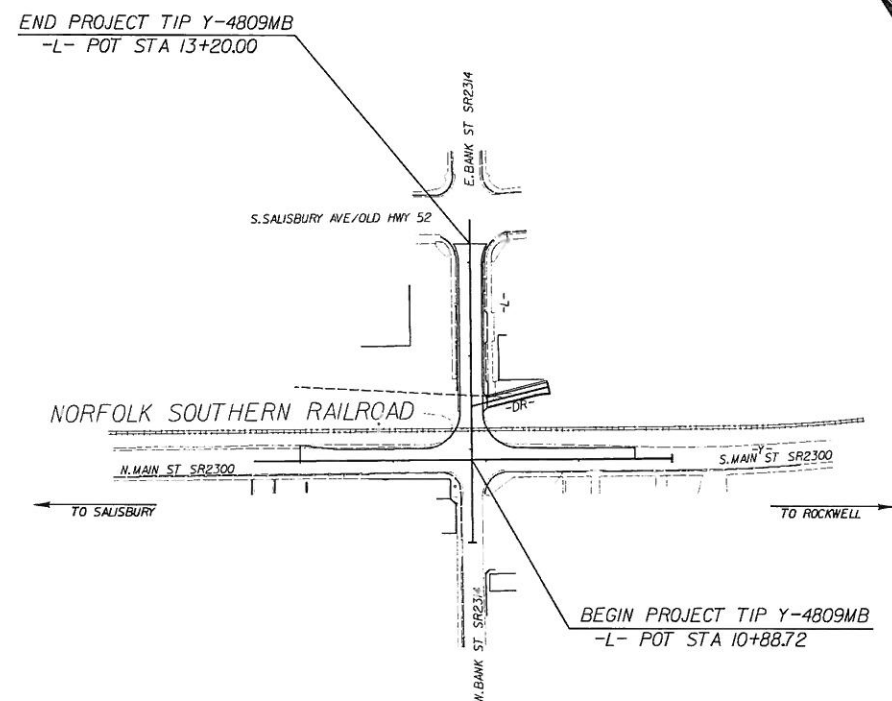
TIP PROJECT: Y-4809



STATE OF NORTH CAROLINA
DIVISION OF HIGHWAYS
PLAN FOR PROPOSED
HIGHWAY EROSION CONTROL
ROWAN COUNTY

**LOCATION: E.BANK ST. (SR 2314) FROM N. MAIN STREET (SR2300)
TO S. SALISBURY AVENUE (OLD HWY 52)
IN GRANITE QUARRY.**

TYPE OF WORK: GRADING, PAVING, & DRAINAGE



STATE	STATE PROJECT REFERENCE NO.	SHEET NO.	TOTAL SHEETS
N.C.	Y-4809MB	EC-1	
STATE PROJ. NO.	P.A. PROJ. NO.	DESCRIPTION	
40325.1.1		P.E. CONST.	

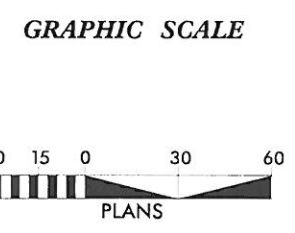
EROSION AND SEDIMENT CONTROL MEASURES

Std. #	Description	Symbol
1630.03	Temporary Silt Ditch	---
1630.05	Temporary Diversion	---
1605.01	Temporary Silt Fence	
1606.01	Special Sediment Control Fence	---X---
1622.01	Temporary Berms and Slope Drains	---
1630.02	Silt Basin Type B	□
1633.01	Temporary Rock Silt Check Type-A	▨
	Temporary Rock Silt Check Type-A with Matting and Polyacrylamide (PAM)	▨
1635.02	Temporary Rock Silt Check Type-B	▨
	Wattle/Coir Fiber Wattle	▨
	Wattle/Coir Fiber Wattle with Polyacrylamide (PAM)	▨
1634.01	Temporary Rock Sediment Dam Type-A	▨
1634.02	Temporary Rock Sediment Dam Type-B	▨
1635.01	Rock Pipe Inlet Sediment Trap Type-A	⊂
1635.02	Rock Pipe Inlet Sediment Trap Type-B	⊂
1630.04	Stilling Basin	▭
1630.06	Special Stilling Basin	▭
	Rock Inlet Sediment Trap:	
1632.01	Type A	A
1632.02	Type B	B
1632.03	Type C	C
	Skimmer Basin	▭
	Tiered Skimmer Basin	▭
	Infiltration Basin	▭

THIS PROJECT CONTAINS
EROSION CONTROL PLANS
FOR CLEARING AND
GRUBBING PHASE OF
CONSTRUCTION.

JOSHUA G. DALTON, PE, CPESC
LEVEL III NAME

3552
LEVEL III CERTIFICATION NO.



THESE EROSION AND SEDIMENT CONTROL PLANS COMPLY
WITH THE REGULATIONS SET FORTH BY THE
NCG-010000 GENERAL CONSTRUCTION PERMIT EFFECTIVE AUGUST 3, 2011
ISSUED BY THE NORTH CAROLINA DEPARTMENT OF ENVIRONMENT AND
NATURAL RESOURCES DIVISION OF WATER QUALITY.

Prepared in the Office of:

SUNGATE DESIGN GROUP, P.A.

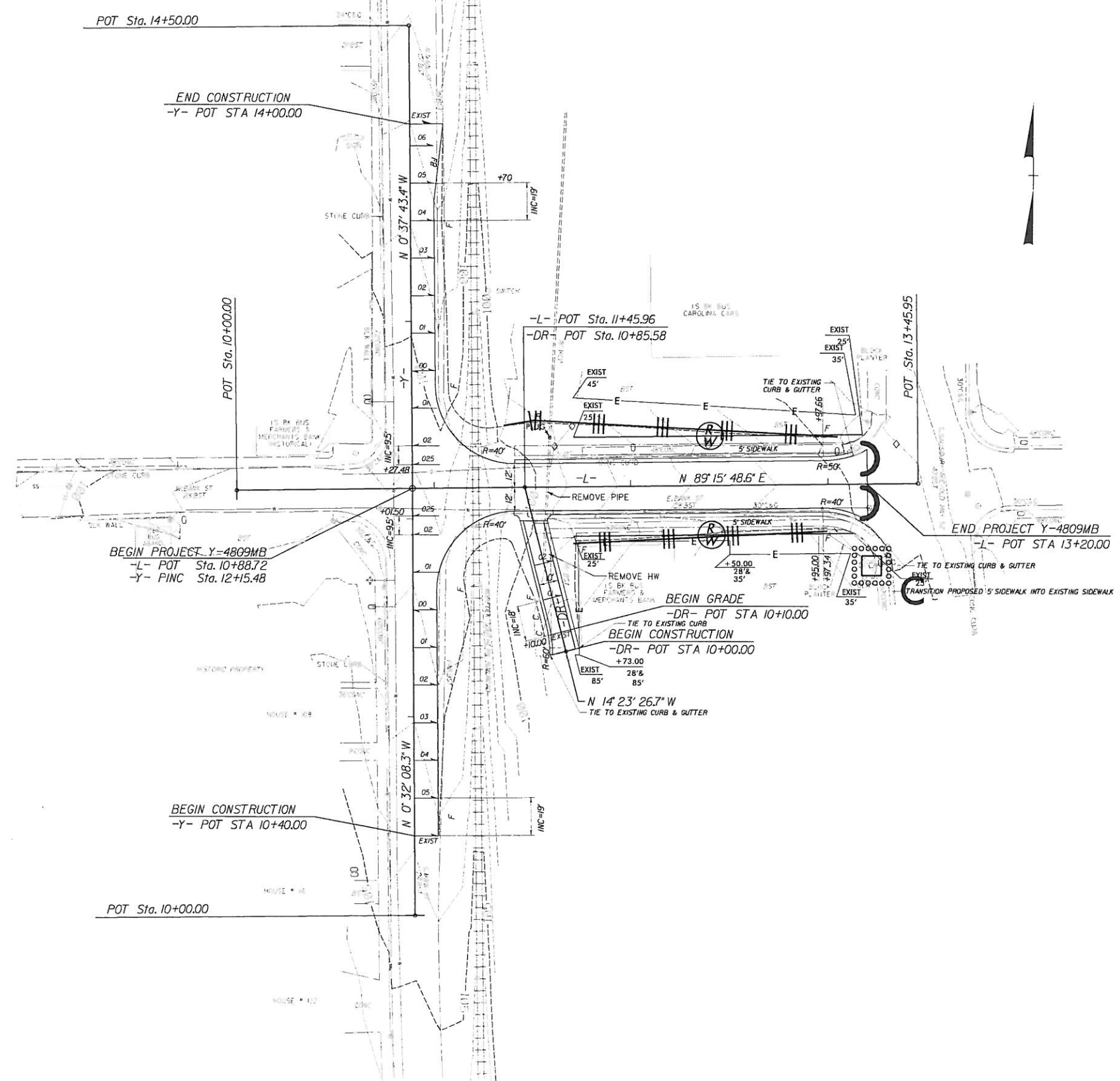
915 JONES FRANKLIN ROAD
RALEIGH, NORTH CAROLINA 27606
TEL (919) 859-2243 FAX (919) 859-6258
ENG FIRM LICENSE NO. C-890

2012 STANDARD SPECIFICATIONS

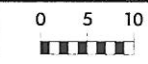
Roadway Standard Drawings

The following roadway english standards as appear in "Roadway Standard Drawings"- Roadway Design Unit - N. C. Department of Transportation - Raleigh, N. C., dated January 2012 and the latest revision thereto are applicable to this project and by reference hereby are considered a part of these plans.

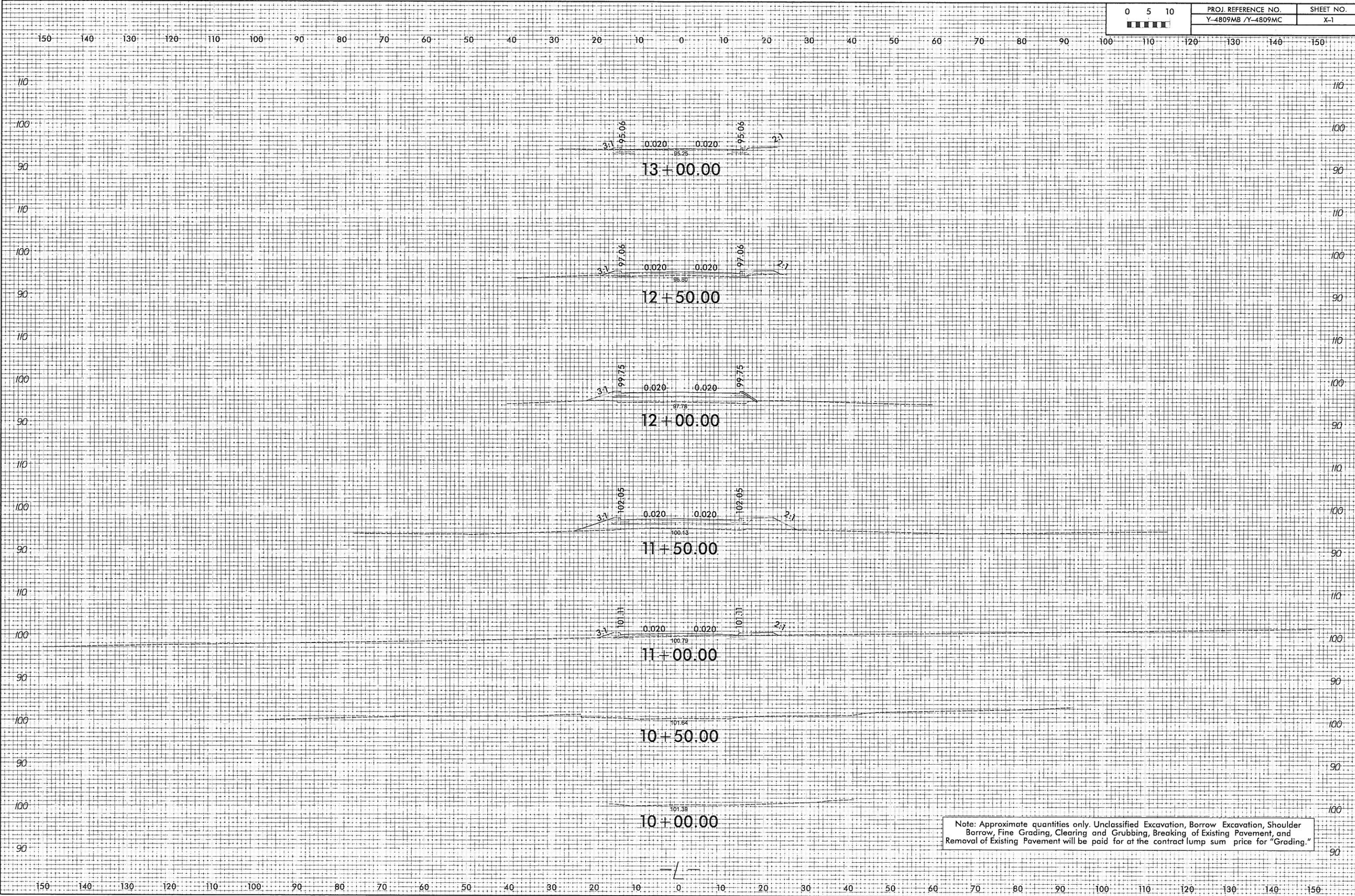
1604.01 Railroad Erosion Control Detail	1632.01 Rock Inlet Sediment Trap Type A
1605.01 Temporary Silt Fence	1632.02 Rock Inlet Sediment Trap Type B
1606.01 Special Sediment Control Fence	1632.03 Rock Inlet Sediment Trap Type C
1607.01 Gravel Construction Entrance	1633.01 Temporary Rock Silt Check Type A
1622.01 Temporary Berms and Slope Drains	1633.02 Temporary Rock Silt Check Type B
1630.01 Riser Basin	1634.01 Temporary Rock Sediment Dam Type A
1630.02 Silt Basin Type B	1634.02 Temporary Rock Sediment Dam Type B
1630.03 Temporary Silt Ditch	1635.01 Rock Pipe Inlet Sediment Trap Type A
1630.04 Stilling Basin	1635.02 Rock Pipe Inlet Sediment Trap Type B
1630.05 Temporary Diversion	1640.01 Coir Fiber Baffle
1630.06 Special Stilling Basin	1645.01 Temporary Stream Crossing
1631.01 Matting Installation	



01
 Project Y-4809MB, EC-2, Joshua G. Dalton, PE, CPESC
 11/11/14

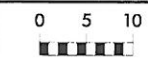


PROJ REFERENCE NO. Y-4809MB / Y-4809MC	SHEET NO. X-1
---	------------------

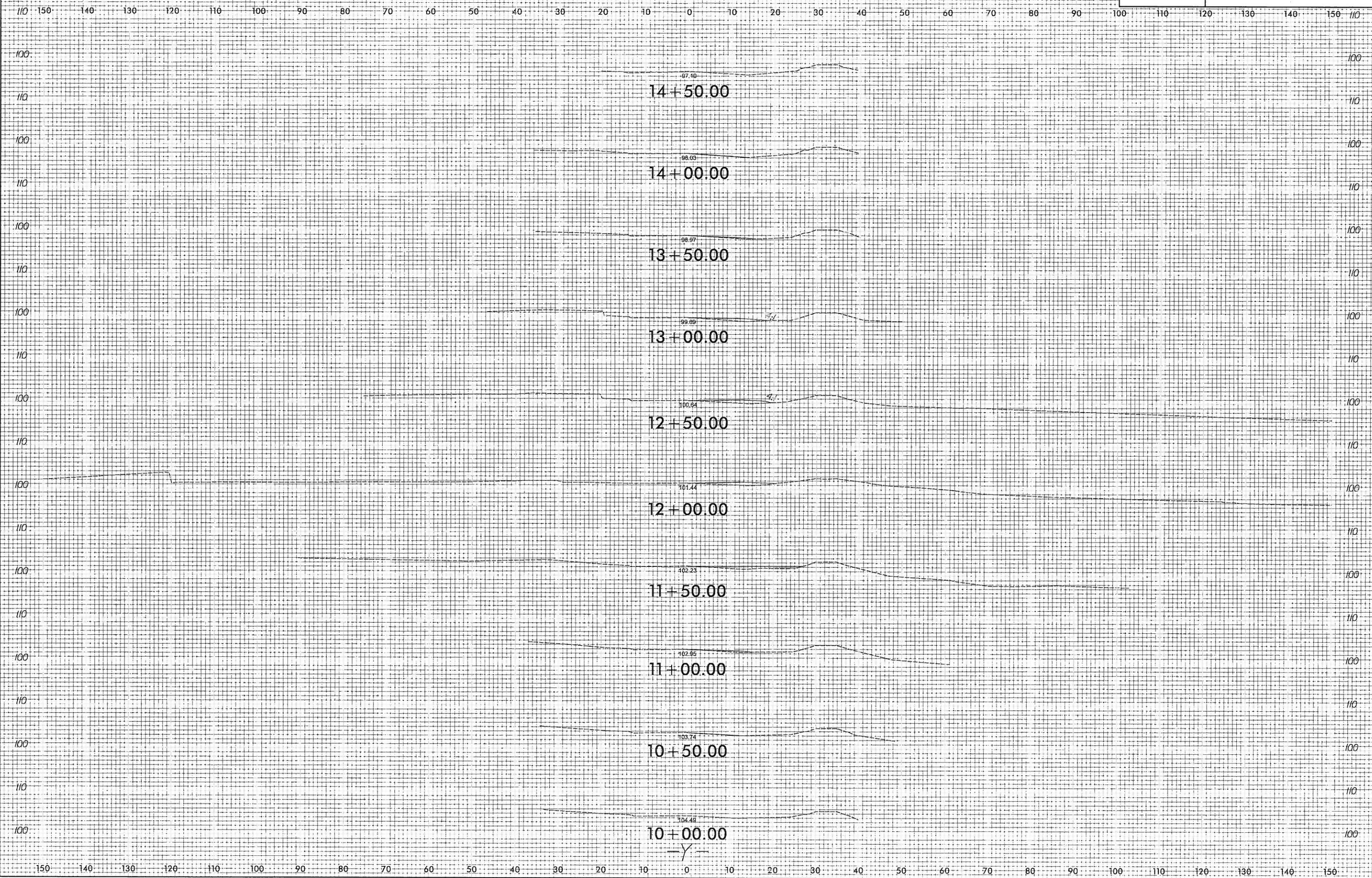


Note: Approximate quantities only. Unclassified Excavation, Borrow Excavation, Shoulder Borrow, Fine Grading, Clearing and Grubbing, Breaking of Existing Pavement, and Removal of Existing Pavement will be paid for at the contract lump sum price for "Grading."

10/26/2011 10:56:54 AM C:\Users\jason\AppData\Local\Temp\111111.dwg - p1.dwg



PROJ. REFERENCE NO.	SHEET NO.
Y-4809MB / Y-4809MC	X-2



4/15/2015 10:54 AM
C:\Users\jw\Documents\Projects\4809MB\4809MC\4809MC.dwg
jw

